

## NEWSLETTER



### Q&A with Todd Meyer

Arkansas Peer Support  
Specialist at P.E.A.R.L.

### Q&A with Todd Meyer, Arkansas Peer Support Specialist at P.E.A.R.L.

*Todd Meyer is a peer support specialist and peer supervisor in training at Positive Energy Affecting Recovering Lives (P.E.A.R.L.), a recovery community organization founded in 2014 to provide assistance, education, and support to the specialty courts and the recovery community of Arkansas.*

#### **What personal and professional experiences led you to your current role of peer supervisor at P.E.A.R.L.?**

I took a big step 3 years ago when I changed careers. At the time, I was a carpenter doing remodeling and construction. One morning, while dropping my son off at school, I received a peer support specialist application from his teacher. I had shared with her my lifelong challenges with substance use disorder and mental illness, and she recognized something in me that I didn't recognize myself: that I was a perfect candidate for helping others find their way to recovery. I had been hearing about peer support from people in my 12-step program. They also encouraged me to pursue peer support as a career.

[Read More](#)

---



## **Alternative Response Team Supports Coloradans in Need**

If individuals in Denver, Colorado, call 911 for a mental health crisis or substance use issue, they may be helped by a specialized civilian team rather than a police or fire department. This is thanks to the Support Team Assisted Response (STAR) Program, an alternative response approach to some calls that come through the city's 911 system.

[Keep Reading](#)

---

# Asian American and Pacific Islander Heritage Month and Mental Health Awareness Month:

## Special Considerations for Individuals Who Are Justice Involved



## Asian American and Pacific Islander Heritage Month and Mental Health Awareness Month: Special Considerations for Individuals Who Are Justice Involved

May is Asian American and Pacific Islander Heritage Month and is a time to celebrate the vast contributions of Asian American, Native Hawaiian, and Pacific Islander (AANHPI) people toward the arts, sciences, government, education, and more. May is also National Mental Health Awareness Month and brings to the forefront the unique mental health challenges within the AANHPI community.

[Continue Reading](#)

---

### Resource Spotlight

SAMHSA's GAINS Center will no longer maintain the Adult Mental Health Treatment Court and Juvenile Mental Health Treatment Court locators on the SAMHSA website. This and updated data are available through the National Treatment Court Resource Center.

- [National Treatment Court Resource Center: Maps](#)

---

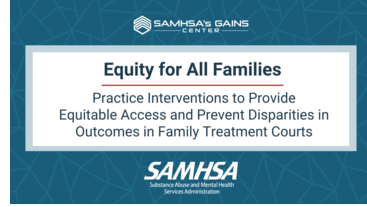
## GAINS Webinar and Newsletter Flashback on Family Engagement and Supports



[CRAFT Supports Families of People Experiencing SUD and Incarceration](#) | February 2023



[Q&A with Ambi Daniel, Director of Family Support Navigation Services, Center for Family Life and Recovery, Inc.](#) | October 2022



[GAINS Webinar: Equity for All Families: Providing Equitable Access in Family Treatment Courts](#) | March 2022



SAMHSA's GAINS Center for Behavioral Health and Justice Transformation is funded by the Substance Abuse and Mental Health Services Administration.

**SAMHSA**  
5600 Fishers Ln | Rockville, MD | 20857 US

Disclaimer: SAMHSA's GAINS Center for Behavioral Health and Justice Transformation develops and distributes this Newsletter with support from SAMHSA. Its contents are solely the responsibility of the authors and do not necessarily represent the official view of SAMHSA.

Share this email:



[Manage](#) your preferences | [Opt out](#) using TrueRemove®

Got this as a forward? [Sign up](#) to receive our future emails.

View this email [online](#).

SAMHSA 5600 Fishers Ln  
Rockville, MD 20857 | US

This email was sent to .

[Subscribe](#) to our email list.